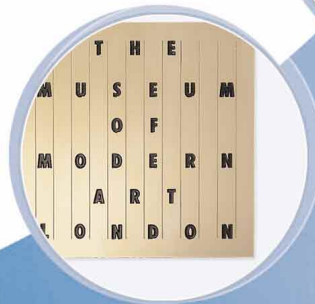


ENGRAVING MACHINE

# Gravotech M40G



**GRAVOGRAPH**  
**NEW HERMES**  
[www.gravograph.com](http://www.gravograph.com)

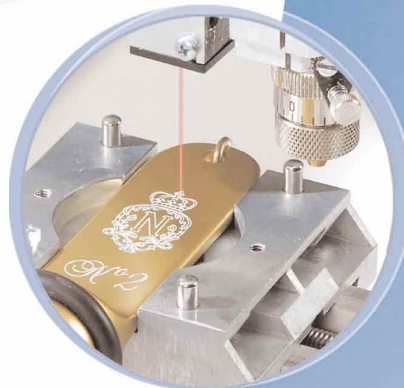
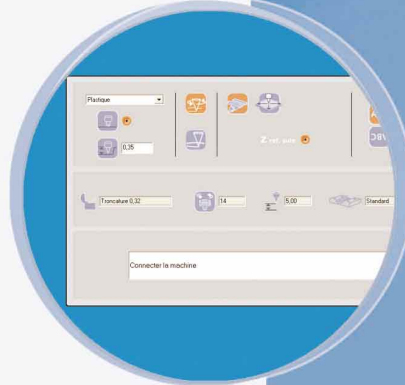
ENGRAVING MACHINE

# GravoTech M40G

- An affordably-priced, compact engraving system that's **easy-to-use**, fast and quiet.
- Delivered standard with the **QuickClick** engraving software - Easy yet professional
- **12 x 8** in engraving area enabling you to engrave a wide range of objects
- **Error-free Engraving** lets you simulate your job before you engrave using the integrated red laser pointer - no measuring required
- **Effortless Cutter Setup** - Integrated Automatic Z reference function included standard
- **Integrated vise and cylindrical attachment** provides quick change-over and increases productivity
- **Easy clamping of a range of products** - flat, bulky, cylindrical or conical
- Integrated lubrication system for **glass engraving**

## IDEAL FOR:

- Glass awards • Mugs, flutes, wine bottles • Trophy plates
- Plaques • Corporate awards
- Plastic or metal badges
- Jewelry • Gifts • Lighters
- Pens • Signage



• **Machine dimensions**  
29 x 21 x 21 in

• **Weight**  
77 lbs

• **Engraving area**  
12 x 8.2 in

• **Maximum dimensions of engraving object (xyz)**  
Motorized vice :  
17.7 x 9.4 x 7.5 in  
Cylinder Diameter: 6.7 in  
Length: 17 in.  
Cone:  $\pm 10^\circ$

• **Z-stroke**  
1.57 in

• **Accessories**  
Pen engraving device  
Range of jigs  
Range of depth  
regulating noses  
Chip collector



**GRAVOGRAPH**  
**NEW HERMES**

Gravograph-New Hermes  
2200 Northmont Parkway  
Duluth, GA 30096

1-800-843-7637  
sales@newhermes.com  
www.gravograph.com